

MONTHLY MEMBERSHIP PROGRESS REPORT

District 201Q1

Results as of: 6/30/2024

GMT:

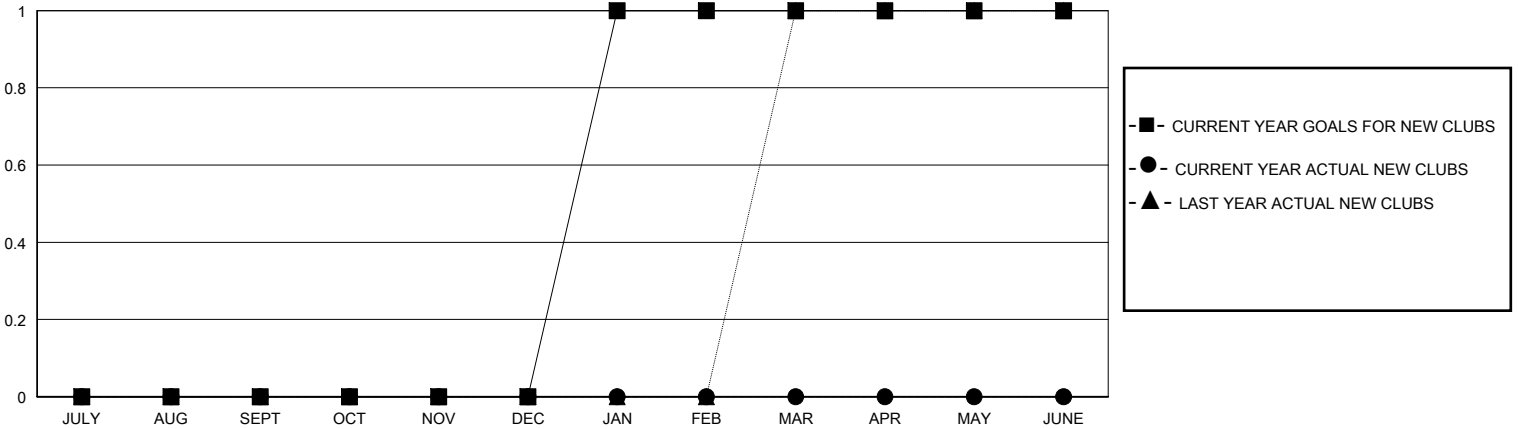
LOCATION AUSTRALIA

GMT CA

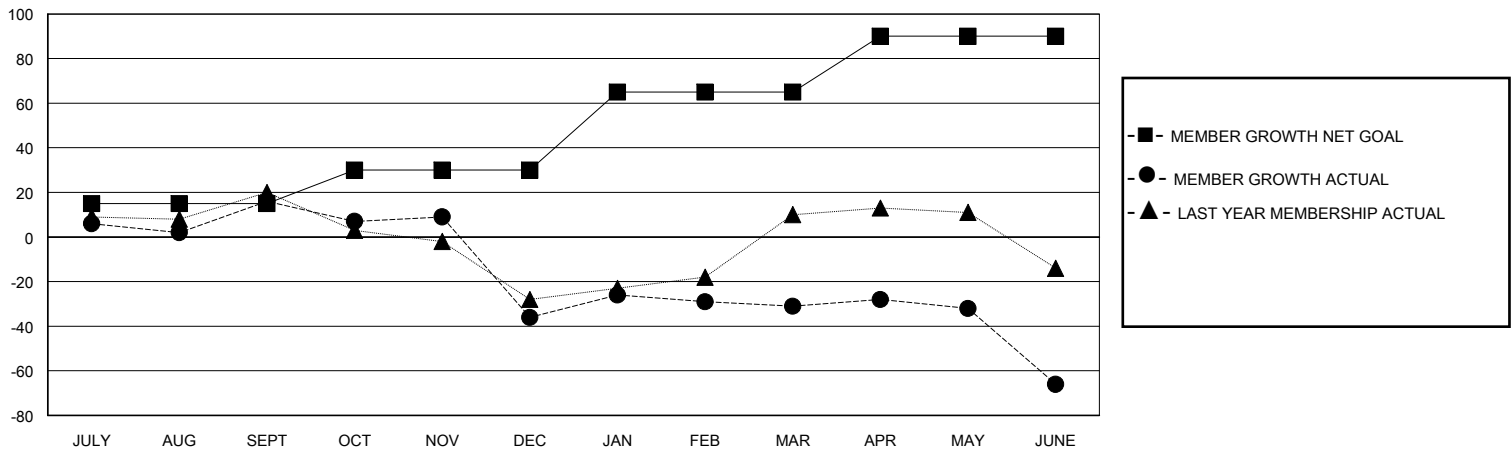
Clubs			
RESULTS FOR 2023-2024			
QUARTER	NEW CLUB GOAL	NEW CLUBS	DROPPED CLUBS
JULY/AUG/SEPT	0	0	0
OCT/NOV/DEC	0	0	1
JAN/FEB/MAR	1	0	0
APR/MAY/JUNE	0	0	0

Members			
RESULTS FOR 2023-2024			
QUARTER	MEMBER GROWTH NET GOAL	MEMBER GROWTH ACTUAL	DROPPED MEMBERS ACTUAL (including transfers)
JULY/AUG/SEPT	15	43	25
OCT/NOV/DEC	15	23	68
JAN/FEB/MAR	35	59	48
APR/MAY/JUNE	25	72	93

GOALS AND ACTUAL NEW CLUBS CUMULATIVE



GOALS AND ACTUAL MEMBERS CUMULATIVE



DROPPED CLUBS: 1	49 CLUBS OF 69 ADDED 1 OR MORE NEW MEMBERS	GENDER DISTRIBUTION MALE 800 (57.47%) FEMALE 591 (42.46%)
DROPPED MEMBERS DECEASED 22 CLUB CANCELLED 7 OTHER 201 TOTAL 230	CLICK HERE FOR CUMULATIVE MEMBERSHIP DATA	TOTAL FAMILY UNIT MEMBERS 241 FAMILY MEMBERS PAYING HALF DUES 124